

RANGEmaster

Sinks & Taps



UNRIVALLED PERFORMANCE

Contents

STAINLESS STEEL SINKS

Arlington	10
Rockford	11
Manhattan	11
Keyhole	12
Oakland	13
Sedona	13
Houston	14
Michigan	15
Baltimore	15
Glendale	16
Kube Undermounts	17
Quad Undermounts	19
Classic Undermounts	21

GRANITE SINKS

Mayon	24
Amethyst	25
Scoria	25
Mica	26
Elements	27
Andesite	28
Paragon	29

FIRE-CLAY CERAMIC SINKS

Austell	32
Rustic	32
Nevada	33
Portland	33
Farmhouse Double Belfast	34
Farmhouse Belfast	35
Classic Double Belfast	36
Classic Belfast	36
Belfast	36
Rustique	37

TAPS

4-in-1 Hot Water Taps	41
Filter Taps	42
Pull Out Taps	42-43
Single Lever Taps	44
Dual Lever Taps	45-48

WASTE DISPOSAL UNITS & ACCESSORIES

Waste Disposal Units	49
Accessories	49

Rangemaster Quality



Our sink and tap collection is renowned for its durable build and high quality. With over 85 years experience manufacturing stainless steel sinks we are the No.1 sink manufacturer in the UK with the majority of our sinks being manufactured at our factory in Long Eaton, Nottingham.

The kitchen sink area is the most used space in the kitchen so it's vital that your chosen sink and tap is built to last in the busiest of environments.

Using the best sourced raw materials available and advanced manufacturing techniques, we design and engineer our products so that they combine functionality, durability and stylish design.

Whether you're retro-fitting or re-styling your kitchen our wide range of sinks and taps cater for all budgets and styles; from the ultra contemporary to the farmhouse-style traditional kitchen schemes.

We are confident our sinks and taps are built to last so that's why we offer a 25 year warranty on our stainless steel & granite sinks collections, 10 years warranty with our fire-clay ceramic sinks and 5 years warranty with our tap collection.

OUR COMMITMENT TO THE ENVIRONMENT

It is testament to our reliability and commitment to the environment that Rangemaster is the proud recipient of double ISO accreditation.

BS EN ISO 9001 certifies that Rangemaster products are designed and manufactured to an internationally recognised quality management system, while BS EN 14001 acknowledges our commitment to continually improving environmental performance by adopting an approved environmental management system.



New Products



We have added many new products in to our new brochure, look out for the **NEW** logo across our pages.



NEW Amethyst in Dove Grey
Pg. 25



NEW Mica Range
Pg. 26



NEW Mayon Range
Featuring a sleek chrome overflow cover Pg. 24

NEW Austell Range
Featuring straight lines and a recessed drainer Pg. 32



NEW Farmhouse Double Belfast
Pg. 34

ROCK SOLID SOLUTIONS

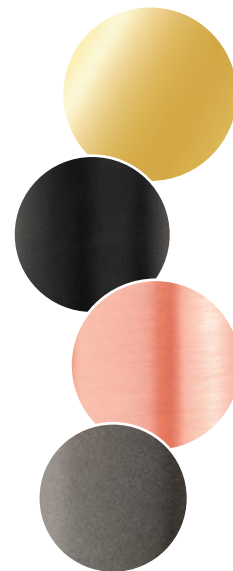
Manufactured from a patented formula of 80% quartz mixed with high-grade acrylic, our Igneous Granite sinks are literally rock solid, built to withstand the busiest of kitchens.

Combining practical solutions with design aesthetics, Igneous granite sinks create the ultimate statement in any kitchen design.

New to the collection are two new ranges, Mica & Mayon. Featuring geometric styled bowls, both options add a new design dimension to a contemporary styled kitchen.

In addition, our popular undermount collection, Paragon, has been extended with the addition of two new compact options which are ideal solutions for compact spaces.

NEW Paragon Compact
Undermount bowl with short projection Pg. 29



ADD A SPLASH OF COLOUR

Enhance your kitchen tap with a splash of colour! Introducing several new beautiful tap colour finishes which include brushed brass, brushed copper, graphite and matt black.

Manufactured from high-grade brass with high-performance ceramic disc cartridges, which are designed to deliver the perfect flow of water every time the handle is turned.

Our new finishes are available in several different collections, in a variety of different designs to suit all budgets.

STATEMENT FAVOURITES

Fire-clay ceramic sinks are still a clear favourite in the kitchen thanks to their smooth surface and high-gloss finish. With a variety of different options available including multiple different Belfast designs to choose from, fire-clay ceramic still continues to make a statement in the heart of the home.

Using only the best quality clay available which is sourced from Cornwall, UK, our fire-clay ceramic sinks are highly resistant against heat, stains and scratches - ideal for any kitchen.

New to the range is Austell, an inset collection featuring modern lines and square bowls.

Our popular Rustique collection has also been extended to include several new square bowls with the addition of a new round bowl variant, all of which can be installed as inset or undermount.

Last, but not least our Farmhouse Belfast collection has two new additions; a Double Bowl Belfast and the new ultra sleek single bowl in a new Anthracite Grey finish, a contemporary twist on a classic favourite.

NEW Rustique Round Bowl
Install as an inset or undermount solution Pg. 37



NEW Farmhouse Belfast in Anthracite Grey
Adding a contemporary twist to a traditional favourite Pg. 35



NEW Intense Range
Pg. 47



Choosing Your Sink

MATERIAL TYPE



STAINLESS STEEL

Remaining the most popular choice when choosing a kitchen sink, stainless steel is a robust, hygienic and hard-working solution.

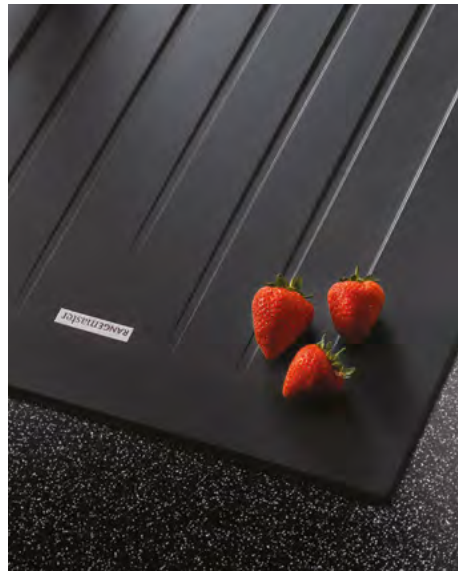
Pre-fitted Clips and Seals – reducing installation time and ensuring a water tight seal is achieved with the work surface every time.

Micro-Sheen™ Finish – an enhanced soft brushed appearance combined with a polished finish which creates a durable high sheen surface.

Ground Edge Trim – adding an additional textural dimension, the subtle ground edge trim frames the sink beautifully.

Waste Kit Included

25 Year Warranty



GRANITE

For a modern and contemporary look, choose a granite sink which are available in multiple different design options in an array of different colours.

Durable Material – resistant against knocks, scratches, heat and stains - ideal for busy family lives.

Hygienic Surface – a non-porous material which naturally repels microbes and stains making the sink much easier to clean.

UV Stability – our patent mix of raw materials protects the colouring from fading offering a fade free finish for years to come.

Waste Kit Included

25 Year Warranty



FIRE-CLAY CERAMIC

A fire-clay ceramic sink will create the ultimate statement piece; with a wide variety of installation options available there is a design style suitable for any style of kitchen.

Easy Clean Surface – featuring a smooth glazed surface, fire-clay ceramic sinks are easy to clean as microbes and stains just simply wipe away.

Superior Strength – thanks to the high gloss glazed finish, Rangemaster ceramic sinks are highly resistant against heat, stains and scratches.

Expanded Colour Range – introducing the new Anthracite Grey finish now available in the Farmhouse Belfast range

Waste Kit Included*

10 Year Warranty

INSTALLATION TYPE



INSET

The most popular design choice, an inset kitchen sink is compatible with any choice of worktop material, however these types of sinks are a great accompaniment to laminate worktops as the pre-fitted seals included with Rangemaster sinks create the ultimate barrier against water ingress which could damage a laminate worktop over time if water were to seep through.

The added benefit of its integrated drainer offers additional food preparation space and allows washed pots to be dried effortlessly.

Inset options are available in:

- Stainless Steel
- Granite
- Fire-Clay Ceramic



UNDERMOUNT

Choose an undermount sink for a sleek, modern and minimalist look. These sinks are installed on the underside of the work surface which extends the worktop area and offers a seamless finished look; increasing the worktop space available make these sinks an ideal solution for compact kitchen spaces.

Often paired with granite and wooden worktops, an undermount sink is a modern solution for a minimalist kitchen scheme.

Undermount options are available in:

- Stainless Steel
- Granite
- Fire-Clay Ceramic



SIT-ON BELFAST

Create the ultimate statement piece in your kitchen with the addition of a sit-on Belfast sink, traditionally styled; these sinks complement shaker style kitchen cabinetry beautifully. If a contemporary look is preferred, there is an option of the Farmhouse Belfast in a new Anthracite Grey finish.

Featuring generous deep bowls, a sit-on Belfast sink is ideal for washing large pots and pans which can't fit into a dishwasher easily.

Sit-on options are available in:

- Fire-Clay Ceramic



STAINLESS STEEL SINKS

The Durable, Resilient & Stylish Choice

Stainless steel remains the most popular material choice when choosing a kitchen sink due to its hard wearing and long-lasting properties.

Rangemaster stainless steel sinks are all manufactured using high-grade 18/10 stainless steel, the additional nickel property included in this material grade offers a long lasting high-sheen finish.

Proudly manufactured in the heart of the midlands in the UK, each sink is hand finished by our experienced craftsmen and supplied with a 25 year warranty offering you peace of mind when purchasing.

There are an array of different designs available suiting inset and undermount installations.

KEY FEATURES



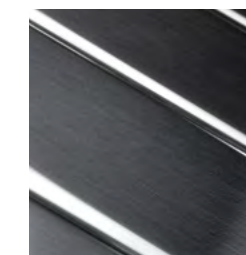
FITTED CLIPS AND SEALS

All stainless steel inset sinks are pre-fitted with clips and seals reducing installation time whilst ensuring a perfect, water-tight fit is retained with the work surface.



SUBTLE GROUND EDGE TRIM

All stainless steel inset sinks are finished with a ground edge trim which beautifully frames the sink.



MICRO-SHEEN™ FINISH

All Rangemaster stainless steel sinks feature a Micro-Sheen™ finished surface; which offers a soft brushed appearance with a polished finish, this advanced application provides a lustrous finished look whilst also enhancing the sinks resistance against heat, scratches and stains.



ROCKFORD

The Rockford incorporates classical linear styling and features distinctive bold lines. This is a versatile sink at home in a wide range of traditional and contemporary kitchens, while also offering impeccable quality and long term durability.

- Micro-sheen™ finish
- Pre-fitted clips and seals
- Ground edge trim
- Handed drainer design
- Waste kit included



Tap shown: Quadrant Monobloc in chrome TQM1CM/

25
YEAR
WARRANTY

985 x 508mm 1 bowl sink with handed drainer

RK9851L/ - Left-hand drainer
RK9851R/ - Right-hand drainer



Min. base unit: 600mm
Main bowl (L x W x D): 340 x 420 x 190mm
Waste kit: Included

985 x 508mm 1.5 bowl sink with handed drainer

RK9852L/ - Left-hand drainer
RK9852R/ - Right-hand drainer



Min. base unit: 600mm
Main bowl (L x W x D): 340 x 420 x 190mm
Second bowl (L x W x D): 160 x 350 x 130mm
Waste kit: Included

Compatible Accessories

KA09/

Strainer bowl
Stainless steel

For use with 1.5
bowl sinks

KA20/

Draining basket
Stainless steel



ARLINGTON

Embracing the trend for all things geometric, featuring stylish square wastes and a smooth drainer, for a bold but streamlined addition to a contemporary kitchen scheme.

- Micro-sheen™ finish
- Pre-fitted clips and seals
- Ground edge trim
- Handed drainer design
- Large bowl design
- Square waste kit included



Tap shown: Quadrant Single Lever in chrome TQSL1CM/

25
YEAR
WARRANTY

985 x 508mm 1 bowl sink with handed drainer

AR9851L/ - Left-hand drainer
AR9851R/ - Right-hand drainer



Min. base unit: 600mm
Main bowl (L x W x D): 450 x 420 x 190mm
Waste kit: Included

985 x 508mm 1.5 bowl sink with handed drainer

AR9852L/ - Left-hand drainer
AR9852R/ - Right-hand drainer



Min. base unit: 600mm
Main bowl (L x W x D): 340 x 420 x 190mm
Second bowl (L x W x D): 160 x 350 x 130mm
Waste kit: Included

Compatible Accessories

WDUSQAD/

Square waste
adaptor:

Required when fitting a
waste disposal unit
with the sink

KA09/

Strainer bowl
Stainless steel

For use with 1.5
bowl sinks

KA20/

Draining basket
Stainless steel



MANHATTAN

The Manhattan combines fantastic good looks with universal appeal. A slightly larger design, this sink features a recessed drainer which prevents water spillage whilst its low profile edges provide a premium flush finished look when installed.

- Micro-sheen™ finish
- Pre-fitted clips and seals
- Ground edge trim
- Handed drainer design
- Waste kit included



Tap shown: Cruciform in brushed TCF2BF/

25
YEAR
WARRANTY

1010 x 515mm 1 bowl sink with handed drainer

MN10101L/ - Left-hand drainer
MN10101R/ - Right-hand drainer



Min. base unit: 500mm
Main bowl (L x W x D): 400 x 420 x 190mm
Waste kit: Included

1010 x 515mm 1.5 bowl sink with handed drainer

MN10102L/ - Left-hand drainer
MN10102R/ - Right-hand drainer



Min. base unit: 600mm
Main bowl (L x W x D): 350 x 420 x 190mm
Second bowl (L x W x D): 156 x 342 x 120mm
Waste kit: Included

Compatible Accessories

KA28/

Strainer bowl
Stainless steel

For use with 1.5
bowl sinks

KA12/

Draining basket
Stainless steel





OAKLAND

A modern twist on a classic design, offering a sleek and contemporary look with a lustrous Micro-Sheen™ finish.

- Micro-sheen™ finish
- Pre-fitted clips and seals
- Ground edge trim
- Handed drainer design
- Large bowl design
- Waste kit included



Tap shown: Cruciform in brushed TCF2BF/

25
YEAR
WARRANTY

985 x 508mm 1 bowl sink with handed drainer

OL9851L/ - Left-hand drainer
OL9851R/ - Right-hand drainer



Min. base unit: 600mm
Main bowl (L x W x D): 450 x 420 x 190mm
Waste kit: Included

985 x 508mm 1.5 bowl sink with handed drainer

OL9852L/ - Left-hand drainer
OL9852R/ - Right-hand drainer



Min. base unit: 600mm
Main bowl (L x W x D): 360 x 424 x 170mm
Second bowl (L x W x D): 156 x 342 x 120mm
Waste kit: Included

Compatible Accessories

KA28/

Strainer bowl
Stainless steel

For use with 1.5
bowl sinks

KA12/

Draining basket
Stainless steel



KEYHOLE

Modern, innovative and beautifully understated, the Keyhole is a truly unique concept in sink design – an example of form and function in perfect harmony. Its large, round bowl is ideal for rinsing large pans and woks, while a deep, recessed drainer provides useful additional space for food preparation, whilst also ensuring no water spills when drying items.

- Micro-sheen™ finish
- Pre-fitted clips and seals
- Ground edge trim
- Reversible drainer design
- Large bowl design
- Waste kit included



Tap shown: Aquamode in chrome TAE1CM/

25
YEAR
WARRANTY

SEDONA

When practical design is more important than state-of-the-art styling. Featuring large welded bowls and a generous draining area, Sedona is the ultimate choice for any kitchen scheme.

- Micro-sheen™ finish
- Pre-fitted clips and seals
- Ground edge trim
- Reversible drainer design
- Waste kit included



Tap shown: Aspire in chrome TAI1CM/

25
YEAR
WARRANTY

1000 x 520mm 1 bowl sink with reversible drainer KY10001/



Min. base unit: 500mm
Main bowl (L x W x D): 420 Ø x 189mm
Waste kit: Included

1000 x 520mm 1.5 bowl sink with reversible drainer KY10002/



Min. base unit: 800mm
Main bowl (L x W x D): 420 Ø x 189mm
Second bowl (L x W x D): 156 x 300 x 120mm
Waste kit: Included

Compatible Accessories

KA26/

Strainer bowl
Stainless steel

For use with 1.5
bowl sinks



985 x 508mm 1 bowl sink with reversible drainer SD9851/



Min. base unit: 600mm
Main bowl (L x W x D): 400 x 420 x 190mm
Waste kit: Included

985 x 508mm 1.5 bowl sink with reversible drainer SD9852/



Min. base unit: 600mm
Main bowl (L x W x D): 350 x 420 x 190mm
Second bowl (L x W x D): 156 x 342 x 120mm
Waste kit: Included

Compatible Accessories

KA28/

Strainer bowl
Stainless steel

For use with 1.5
bowl sinks

KA12/

Draining basket
Stainless steel





MICHIGAN

Made from high-grade 18/10 stainless steel, the Michigan range includes the option of a compact sink, ideal solution for smaller kitchen spaces.

- Compact option available
- Micro-sheen™ finish
- Pre-fitted clips and seals
- Ground edge trim
- Reversible drainer design
- Waste kit included



Tap shown: Aquavogue in chrome TVO1CM/

25
YEAR
WARRANTY

800 x 508mm 1 bowl sink with reversible drainer
MG8001/



Min. base unit: 450mm
Main bowl (L x W x D): 360 x 424 x 155mm
Waste kit: Included

950 x 508mm 1 bowl sink with reversible drainer
MG9501/



Min. base unit: 500mm
Main bowl (L x W x D): 360 x 424 x 155mm
Waste kit: Included

950 x 508mm 1.5 bowl sink with reversible drainer
MG9502/



Min. base unit: 600mm
Main bowl (L x W x D): 360 x 424 x 155mm
Second bowl (L x W x D): 151 x 300 x 120mm
Waste kit: Included

HOUSTON

The Houston sink family features an eye-catching 'waterfall' styled drainer, which promises to create a design statement in any kitchen. Both models boast welded bowls to ensure high durability, while their generous dimensions offer excellent levels of practicality for homeowners who put their sink through its paces.

- Micro-sheen™ finish
- Pre-fitted clips and seals
- Ground edge trim
- Reversible drainer design
- Waste kit included



Tap shown: Aquatrend in chrome TRE1CM/

25
YEAR
WARRANTY

985 x 508mm 1 bowl sink with reversible drainer
HS9851/



Min. base unit: 600mm
Main bowl (L x W x D): 400 x 420 x 190mm
Waste kit: Included

985 x 508mm 1.5 bowl sink with reversible drainer
HS9852/



Min. base unit: 600mm
Main bowl (L x W x D): 350 x 420 x 190mm
Second bowl (L x W x D): 156 x 342 x 125mm
Waste kit: Included

Compatible Accessories

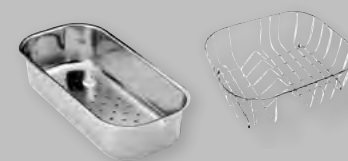
KA28/

Strainer bowl
Stainless steel

For use with 1.5
bowl sinks

KA12/

Draining basket
Stainless steel



BALTIMORE

Flexible in form and function, the Baltimore family includes compact, standard single bowl and 1.5 bowl variants. Utilising a stylish "sun burst" design drainer and manufactured from high grade stainless steel the Baltimore collection hosts three quality sinks which are at home in either contemporary or traditional styled kitchens.

- Compact option available
- Micro-sheen™ finish
- Pre-fitted clips and seals
- Ground edge trim
- Reversible drainer design
- Waste kit included



Tap shown: Aquaflow in chrome TAF1CM/

25
YEAR
WARRANTY

800 x 508mm 1 bowl sink with reversible drainer
BL8001/



Min. base unit: 450mm
Main bowl (L x W x D): 340 x 424 x 150mm
Waste kit: Included

950 x 508mm 1 bowl sink with reversible drainer
BL9501/



Min. base unit: 600mm
Main bowl (L x W x D): 420 x 400 x 160mm
Waste kit: Included

950 x 508mm 1.5 bowl sink with reversible drainer
BL9502/



Min. base unit: 600mm
Main bowl (L x W x D): 340 x 410 x 160mm
Second bowl (L x W x D): 175 x 320 x 80mm
Waste kit: Included



KUBE UNDERMOUNTS

With a dramatic 10mm radii defining the corners of this bowl type, the Kube undermount creates a geometric effect which will sit perfectly within streamlined cabinetry. Featuring a modern square waste and overflow, this range is available in a mix of single, 1.5 and double bowl configurations.

- Micro-sheen™ finish
- 10mm radius corners
- Waste kit included
- Hygienic overflow design



25
YEAR
WARRANTY

Tap shown: Quadrant Contemporary in brushed TQC1BF/

210 x 430mm 1 bowl sink
KUB18/



Min. base unit: 300mm
Main bowl (L x W x D): 180 x 400 x 140mm
Waste kit: Included

530 x 430mm 1 bowl sink
KUB50/



Min. base unit: 600mm
Main bowl (L x W x D): 500 x 400 x 200mm
Waste kit: Included

740 x 430mm 1.5 bowl handed sink
KUB5018L/ left hand
KUB5018R/ right-hand



Min. base unit: 800mm
Main bowl (L x W x D): 500 x 400 x 200mm
Second bowl (L x W x D): 180 x 400 x 140mm
Waste kit: Included

GLENDALE

Manufactured from high-grade stainless steel, the Glendale promises to be practical and hard working, with a 25 year warranty as standard. Offering the flexibility of a single bowl or 1.5 bowl option, the drainer takes on a bold linear design which is easy to clean and sits perfectly within a range of kitchen styles.

- Micro-sheen™ finish
- Pre-fitted clips and seals
- Ground edge trim
- Reversible drainer design
- Waste kit included



25
YEAR
WARRANTY

Tap shown: Aquadisc 3 in chrome TAD3CM/

370 x 430mm 1 bowl sink
KUB34/



Min. base unit: 400mm
Main bowl (L x W x D): 340 x 400 x 200mm
Waste kit: Included

730 x 430mm 1 bowl sink
KUB70/



Min. base unit: 800mm
Main bowl (L x W x D): 700 x 400 x 200mm
Waste kit: Included

860 x 430mm 2 bowl sink
KUB4040/



Min. base unit: 900mm
Main bowl (L x W x D): 400 x 400 x 190mm
Second bowl (L x W x D): 400 x 400 x 190mm
Waste kit: Included

950 x 508mm 1 bowl sink with reversible drainer
GL9501/



Min. base unit: 500mm
Main bowl (L x W x D): 360 x 424 x 155mm
Waste kit: Included

950 x 508mm 1.5 bowl sink with reversible drainer
GL9502/



Min. base unit: 600mm
Main bowl (L x W x D): 360 x 424 x 155mm
Second bowl (L x W x D): 156 x 342 x 120mm
Waste kit: Included

Compatible Accessories

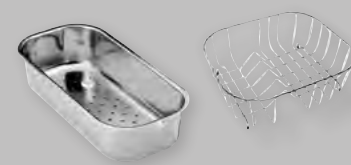
KA28/

Strainer bowl
Stainless steel

For use with 1.5
bowl sinks

KA12/

Draining basket
Stainless steel



430 x 430mm 1 bowl sink
KUB40/



Min. Base unit: 500mm
Main bowl (L x W x D): 400 x 400 x 200mm
Waste kit: Included

580 x 430mm 1.5 bowl handed sink
KUB3418L/ left hand
KUB3418R/ right hand

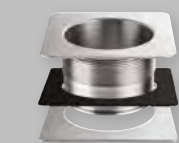


Min. Base unit: 600mm
Main bowl (L x W x D): 340 x 400 x 190mm
Second bowl (L x W x D): 180 x 400 x 140mm
Waste kit: Included

Compatible Accessories

WDUSQAD/

Square waste adaptor:
required when fitting a waste
disposal unit with sink





QUAD UNDERMOUNTS

Made from high grade stainless steel with subtle 25mm radius corners the Quad undermount sinks also feature a modern square waste design which perfectly complements a contemporary styled kitchen scheme.

- Micro-sheen™ finish
- 25mm radius corners
- Square waste kit included
- Hygienic overflow design



Tap shown: Quadrant Contemporary in brushed TQC1BF/

200 x 340mm 1 bowl sink
QUB16/



Min. base unit: 300mm
Main bowl (L x W x D): 160 x 300 x 115mm
Waste kit: Included

530 x 450mm 1 bowl sink
QUB48/



Min. base unit: 600mm
Main bowl (L x W x D): 480 x 400 x 195mm
Waste kit: Included

740 x 450mm 1.5 bowl handed sink
QUB4818L/ left hand
QUB4818R/ right-hand



Min. base unit: 800mm
Main bowl (L x W x D): 480 x 400 x 195mm
Second bowl (L x W x D): 180 x 400 x 120mm
Waste kit: Included

234 x 450mm 1 bowl sink
QUB18/



Min. base unit: 300mm
Main bowl (L x W x D): 180 x 400 x 120mm
Waste kit: Included

580 x 450mm 1.3 bowl handed sink
QUB3416L/ left hand
QUB3416R/ right hand



Min. base unit: 600mm
Main bowl (L x W x D): 340 x 400 x 185mm
Second bowl (L x W x D): 160 x 300 x 115mm
Waste kit: Included

760 x 450mm 2 bowl sink
QUB3434/



Min. base unit: 800mm
Main bowl (L x W x D): 340 x 400 x 185mm
Second bowl (L x W x D): 340 x 400 x 185mm
Waste kit: Included

390 x 450mm 1 bowl sink
QUB34/



Min. base unit: 400mm
Main bowl (L x W x D): 340 x 400 x 185mm
Waste kit: Included

600 x 450mm 1.5 bowl handed sink
QUB3418L/ left hand
QUB3418R/ right hand



Min. base unit: 600mm
Main bowl (L x W x D): 340 x 400 x 180mm
Second bowl (L x W x D): 180 x 400 x 120mm
Waste kit: Included

Compatible Accessories
WDUSQAD/

Square waste adaptor:
required when fitting a waste
disposal unit with sink





CLASSIC UNDERMOUNTS

The Classic undermounts have an elegant curvature to the bowls, creating a discreet sink solution suited to any kitchen scheme. Flexibility is at the forefront of Rangemaster's undermount sinks, with the option of combining different bowl sizes to suit with the choice of handed and reversible options.

- Micro-sheen™ finish
- 65mm radius corners
- Waste kit included
- Hygienic overflow design



25
YEAR
WARRANTY

Tap shown: Aquaclassic 3 in chrome TAC3CM/

185 x 370mm 1 bowl sink
UB15/



Min. base unit: 300mm
Main bowl (L x W x D): 156 x 342 x 120mm
Waste kit: Included

490 x 460mm 1 bowl sink
UB45/



Min. base unit: 600mm
Main bowl (L x W x D): 450 x 420 x 190mm
Waste kit: Included

671 x 460mm 1.5 bowl handed sink
UB4015L/ left hand
UB4015R/ right-hand



Min. base unit: 800mm
Main bowl (L x W x D): 420 x 400 x 190mm
Second bowl (L x W x D): 156 x 342 x 120mm
Waste kit: Included

378 x 448mm 1 bowl sink
UB35/



Min. base unit: 400mm
Main bowl (L x W x D): 350 x 420 x 190mm
Waste kit: Included

597 x 472mm 1.5 bowl reversible sink
UB3515/



Min. base unit: 600mm
Main bowl (L x W x D): 350 x 420 x 190mm
Second bowl (L x W x D): 156 x 342 x 120mm
Waste kit: Included

787 x 472mm 2 bowl sink
UB3535/



Min. base unit: 800mm
Main bowl (L x W x D): 350 x 420 x 190mm
Second bowl (L x W x D): 350 x 420 x 190mm
Waste kit: Included

460 x 440mm 1 bowl sink
UB40/



Min. base unit: 500mm
Main bowl (L x W x D): 420 x 400 x 190mm
Waste kit: Included

597 x 472mm 1.5 bowl handed sink
UB3515L/ left hand
UB3515R/ right hand



Min. base unit: 600mm
Main bowl (L x W x D): 350 x 420 x 190mm
Second bowl (L x W x D): 156 x 342 x 120mm
Waste kit: Included

945 x 460mm 2 bowl sink
UB4040/



Min. base unit: 1000mm
Main bowl (L x W x D): 420 x 400 x 190mm
Second bowl (L x W x D): 420 x 400 x 190mm
Waste kit: Included



The Bold, Contemporary & Robust Choice

Choose a granite sink for a contemporary, sleek finished look. There are an array of different designs to choose from in a variety of different colours.

IGNEOUS GRANITE



Constructed from a patented formula of 80% quartz - the toughest element of granite - and high-grade acrylic, the Igneous sink collection is literally rock solid. Its natural anti-bacterial surface repels microbes and stains which means cleaning is a dream.

KEY FEATURES

DURABLE MATERIAL

Resistant against knocks, scratches, stains and heat.

HYGIENIC SURFACE

Non-porous surface which repels microbes and stains making the sink much easier to clean.

UV STABILITY

Fade free colour finish for years to come.

25 YEAR WARRANTY

WIDE RANGE OF COLOURS AVAILABLE

Choose from Stone, Crystal White, Dove Grey & Ash Black

GRANITE SINKS



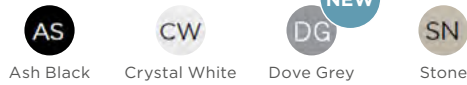


AMETHYST

The modern classic lines of this elegant trio will look equally at home in a contemporary or traditional kitchen. If space is restricted, a compact version is also available within the range.

- Igneous granite
- Reversible drainer
- Compact option
- Waste kit included

*Available finishes:



25
YEAR
WARRANTY

RANGEMASTER
IGNEOUS

Tap shown: Aquatrend in chrome TRE1CM/

860 x 500mm 1 bowl sink with reversible drainer
AME860__/_/



Min. base unit: 450mm
Main bowl (L x W x D): 348 x 422 x 204mm
Waste kit: Included

1000 x 500mm 1 bowl sink with reversible drainer
AME1051__/_/



Min. base unit: 600mm
Main bowl (L x W x D): 482 x 422 x 220mm
Waste kit: Included

1000 x 500mm 1.5 bowl sink with reversible drainer
AME1052__/_/



Min. base unit: 600mm
Main bowl (L x W x D): 341 x 422 x 204mm
Second bowl (L x W x D): 161 x 301 x 148mm
Waste kit: Included

MAYON

Featuring sharp geometric bowls and a smooth drainer design, the Mayon range also features a sleek chrome branded overflow cover adding a premium finish to the overall sink design. The Mayon range is composed of 3 options; single bowl in standard and ultra compact sizes and a 1.5 bowl option.

- Igneous granite
- Reversible drainer
- Branded overflow cover
- Ultra compact option
- Waste kit included

*Available finishes:



25
YEAR
WARRANTY

RANGEMASTER
IGNEOUS

Tap shown: Quadrant Single Lever in chrome TQSL1CM/

SCORIA

Sleek, sophisticated styling with a tough, resistant composition; the Scorias crisp, minimalist lines make this a popular choice for the modern kitchen.

- Igneous granite
- Reversible drainer
- Waste kit included

*Available finishes:



25
YEAR
WARRANTY

RANGEMASTER
IGNEOUS

Tap shown: Salerno in chrome TSN1CM/

690 x 510mm 1 bowl sink with reversible drainer
MAY690__/_/



Min. Base Unit: 450mm
Main Bowl (L x W x D): 365 x 448 x 195mm
Waste kit: Included

1000 x 510mm 1 bowl sink with reversible drainer
MAY1051__/_/



Min. Base Unit: 600mm
Main Bowl (L x W x D): 500 x 446 x 195mm
Waste kit: Included

1000 x 510mm 1.5 bowl sink with reversible drainer
MAY1052__/_/



Min. Base Unit: 600mm
Main Bowl (L x W x D): 334 x 446 x 195mm
Second Bowl (L x W x D): 167 x 296 x 120mm
Waste kit: Included

1000 x 500mm 1 bowl sink with reversible drainer
SCO1051__/_/



Min. Base Unit: 600mm
Main Bowl (L x W x D): 480 x 440 x 200mm
Waste kit: Included

1000 x 500mm 1.5 bowl sink with reversible drainer
SCO1052__/_/

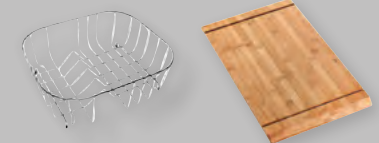


Min. Base Unit: 600mm
Main Bowl (L x W x D): 345 x 440 x 200mm
Second Bowl (L x W x D): 155 x 295 x 146mm
Waste kit: Included

Compatible Accessories

KA12/ Draining basket
Stainless steel

KA10/ Chopping board
Bamboo





MICA

Featuring a unique bowl design and a drainer with defined straight lines, Mica blends contemporary style with practical design effortlessly. Made from Igneous granite, the Mica range is available in 3 options; single bowl in standard and compact sizes and a 1.5 bowl option.

- Igneous granite
- Reversible drainer
- Compact option
- Waste kit included

*Available finishes:



Tap shown: Aquatrend Single Lever in chrome TRE1SLCM/

860 x 500mm 1 bowl sink with reversible drainer

MIC860__/_



Min. Base Unit: 500mm
Main Bowl (L x W x D): 415 x 446 x 195mm
Waste kit: Included

1000 x 500mm 1 bowl sink with reversible drainer

MIC1051__/_



Min. Base Unit: 600mm
Main Bowl (L x W x D): 484 x 443 x 195mm
Waste kit: Included

1000 x 500mm 1.5 bowl sink with reversible drainer

MIC1052__/_



Min. Base Unit: 600mm
Main Bowl (L x W x D): 335 x 443 x 195mm
Second Bowl (L x W x D): 151 x 336 x 120mm
Waste kit: Included

ELEMENTS

Elements combines style with functionality; its recessed drainer ensures water spillage is kept to a minimum, while its large square look bowls add contemporary design to your kitchen style.

- Igneous granite material
- Reversible drainer
- Waste kit included

*Available finishes:



Tap shown: Quadrant Contemporary in chrome TRE1CM/

1000 x 500mm 1 bowl sink with reversible drainer

ELE1051__/_



Min. base unit: 600mm
Main bowl (L x W x D): 480 x 420 x 180mm
Waste kit: Included

1000 x 500mm 1.5 bowl sink with reversible drainer

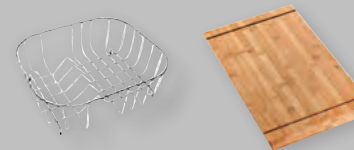
ELE1052__/_



Min. base unit: 600mm
Main bowl (L x W x D): 380 x 420 x 180mm
Second bowl (L x W x D): 125 x 282 x 120mm
Waste kit: Included

Compatible Accessories

KA12/ KA10/
Draining basket Chopping board
Stainless steel Bamboo



ANDESITE

Andesite encompasses a simple yet sleek drainer pattern alongside large geometric bowls, which offer a contemporary look that is at home in a range of modern kitchens. Attractive circular wastes and overflows, bold contemporary lines and low radius corners culminate into a stunning design for the trend conscious home.

- Igneous granite
- Reversible drainer
- Waste kit included

*Available finishes:



1000 x 500mm 1 bowl sink with reversible drainer
AND1051__/_/



Min. base unit: 600mm
Main bowl (L x W x D): 480 x 430 x 200mm
Waste kit: Included

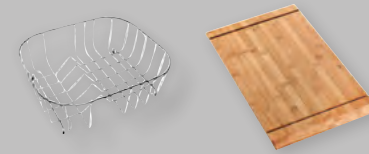
1000 x 500mm 1.5 bowl sink with reversible drainer
AND1052__/_/



Min. base unit: 600mm
Main bowl (L x W x D): 345 x 430 x 200mm
Second bowl (L x W x D): 155 x 340 x 146mm
Waste kit: Included

Compatible Accessories

KA12/ Draining basket
Stainless steel
KA10/ Chopping board
Bamboo



25
YEAR
WARRANTY

RANGEMASTER
IGNEOUS

Tap shown: Quadrant Contemporary in chrome TQC1CM/

PARAGON

Boasting a modern geometric design, our Paragon sink is the ideal match for composite work surfaces and fits neatly within standard cabinetry.

- Igneous granite material
- Undermount installation
- Waste kit included

*Available finishes:

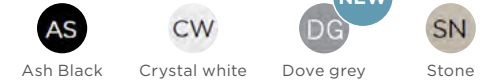


Ash Black Crystal White Grey
Above colour finishes available with PAR4553__/_/ & PAR3641__/_/ sinks only



25
YEAR
WARRANTY

RANGEMASTER
IGNEOUS



Ash Black Crystal white Dove grey Stone
Above colour finishes available with PAR3115__/_/ sink only

533 x 457mm 1 bowl sink
PAR4553__/_/



Min. base unit: 600mm
Main bowl (L x W x D): 469 x 393 x 209mm
Waste kit: Included

824 x 481mm 2 bowl sink
PAR3641__/_/



Min. base unit: 900mm
Main bowl (L x W x D): 362 x 395 x 241mm
Second bowl: (L x W x D): 362 x 395 x 241mm
Waste kit: Included

550 x 430mm 1.5 bowl sink*
PAR3115__/_/



Min. base unit: 600mm
Main bowl (L x W x D): 310 x 370 x 200mm
Second bowl (L x W x D): 152 x 370 x 130mm
Waste kit: Included
* Sink can also be installed as inset



PARAGON COMPACT

This new compact addition offers a shorter width which is ideal for smaller areas where space is at a premium.

- Compact size
- Igneous granite material
- Undermount Installation
- Waste kit included

*Available finishes:



Ash Black Crystal White Dove Grey

501 x 377mm 1 bowl sink
PAR4432__/_/



Min. base unit: 600mm
Main bowl (L x W x D): 449 x 325 x 168mm
Waste kit: Included

215 x 378mm 0.5 bowl sink
PAR1632__/_/



Min. base unit: 300mm
Main bowl (L x W x D): 162 x 325 x 128mm
Waste kit: Included



25
YEAR
WARRANTY

RANGEMASTER
IGNEOUS



The Classic 'Statement Piece' Choice

The kitchen sink is one of the most used items of your kitchen so why not add a statement piece to enhance the overall look of your space.

With the addition of a fire-clay ceramic sink you are guaranteed a sink which will retain its high gloss colour and shine for its lifetime.

Our ceramic sinks are manufactured using clay sourced from Cornwall, UK. Moulded and fired at high temperatures, our ceramic sinks are robust and hygienic thanks to the high-gloss glaze finish with each sink.

There are a choice of inset, undermount and sit-on Belfast options available in a variety of different styles. Thanks to its natural high-gloss finish, a fire-clay ceramic sink beautifully complements any style work surface.

If you are seeking a classic design with a contemporary twist then check out our new Farmhouse Belfast sink in a new anthracite grey finish - this is sure to make a bold statement in any kitchen.

KEY FEATURES

EASY CLEAN SURFACE

Thanks to its smooth glazed surface, a Rangemaster fire-clay ceramic sink is easy to clean as microbes and stains just simply wipe away.

SUPERIOR STRENGTH

Thanks to the high gloss glazed finish, Rangemaster ceramic sinks are highly resistant against heat, stains and scratches.

EXPANDED COLOUR RANGE

Introducing the new Anthracite Grey finish now available in the Farmhouse Belfast range.

FIRE-CLAY CERAMIC SINKS

AUSTELL

Paying homage to where its core raw material is sourced, Cornwall UK. Austell is a robust, hard-wearing choice thanks to its inherent strength. This design features a modern recessed drainer design with bold straight lines and generous sized bowls, which are ideal for washing large pots and pans.

- Fire-clay ceramic
- Reversible drainer
- Waste kit included



10 YEAR WARRANTY

Tap shown: Aspire in chrome TAI1CM/

NEVADA

The Nevada collection offers a unique blend of ceramic durability and ultra contemporary styling. Made from high quality fire-clay and glazed to a rich silky lustre, the Nevada is a joy to live with. With sleek bowls and a deep recessed drainer the sink is easy to clean and extremely hard wearing.

- Smooth, minimalist drainer design
- Fire-clay ceramic
- Reversible drainer
- Note: waste kits are sold separately



10 YEAR WARRANTY

Tap shown: Quadrant Contemporary in chrome TQC1CM/

1000 x 500mm 1 bowl sink with reversible drainer
CAU10101WH/



NEW

Min. base unit: 600mm
Main bowl (L x W x D): 449 x 415 x 190mm
Waste kit: Included

1000 x 500mm 1.5 bowl sink with reversible drainer
CAU10102WH/

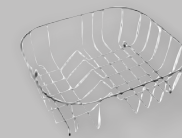


NEW

Min. base unit: 600mm
Main bowl (L x W x D): 340 x 415 x 190mm
Second bowl (L x W x D): 170 x 300 x 142mm
Waste kit: Included

Compatible Accessories

KA12/
Draining basket
Stainless steel



1010 x 510mm 1 bowl sink with reversible drainer
CNV1WH/



Min. Base Unit: 600mm
Main Bowl (L x W x D): 470 x 340 x 185mm
Waste kit: Sold separately, please order WKIT15/

1010 x 510mm 1.5 bowl sink with reversible drainer
CNV2WH/



Min. Base Unit: 600mm
Main Bowl (L x W x D): 350 x 340 x 190mm
Second Bowl (L x W x D): 140 x 340 x 125mm
Waste kit: Sold separately, please order WKIT22/

Compatible Accessories

KA12/ WKIT15/ WKIT22/
Strainer basket Waste kit for Waste kit for 1.5
Stainless steel 1 bowl sinks bowl sinks



RUSTIC

Rustic catches the morning light - and the eye. Offering a modern farmhouse feel, these sinks are beautifully easy to clean and fully cater for the needs of the enthusiastic chef.

- Fire-clay ceramic
- Reversible drainer
- Waste kit included



10 YEAR WARRANTY

Tap shown: Aquaclassic 2 in chrome with white handles TAC2CM/WH

PORTLAND

Designed to sit elegantly within a variety of kitchen schemes, the charming Portland fire-clay ceramic sink bears a smooth, high gloss finish, being both easy to clean and extremely durable. A choice of single bowl or 1.5 bowl variants offers flexibility to suit your everyday use.

- Fire-clay ceramic
- Reversible drainer
- Note: waste kits are sold separately



10 YEAR WARRANTY

Tap shown: Aquatrend in chrome TRE1CM/

1000 x 500mm 1 bowl sink with reversible drainer
CRT10101WH/



Min. base unit: 600mm
Main bowl (L x W x D): 460 x 390 x 195mm
Waste kit: Included

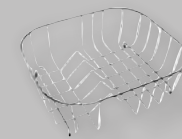
1000 x 500mm 1.5 bowl sink with reversible drainer
CRT10202WH/



Min. base unit: 600mm
Main bowl (L x W x D): 360 x 390 x 195mm
Second bowl (L x W x D): 147 x 260 x 120mm
Waste kit: Included

Compatible Accessories

KA12/
Draining basket
Stainless steel



1010 x 510mm 1 bowl sink with reversible drainer
CPL10101WH/



Min. base unit: 600mm
Main bowl (L x W x D): 460 x 400 x 195mm
Waste kit: Sold separately, please order WKIT15/

1010 x 510mm 1.5 bowl sink with reversible drainer
CPL10102WH/



Min. base unit: 600mm
Main bowl (L x W x D): 350 x 410 x 195mm
Second bowl (L x W x D): 135 x 257 x 125mm
Waste kit: Sold separately, please order WKIT24/

Compatible Accessories

KA12/ WKIT15/ WKIT22/
Strainer basket Waste kit for Waste kit for 1.5
Stainless steel 1 bowl sinks bowl sinks





DOUBLE BOWL FARMHOUSE BELFAST

The ultimate statement piece in your kitchen with the addition of a beautiful double-bowl Farmhouse Belfast sink. Manufactured from high-grade fire-clay ceramic featuring ultra smooth surfaces throughout, this sink exudes luxury living at its best.

- Fire-clay ceramic
- Double bowls - ideal for washing large pots and pans
- Overflow included
- Waste kit included



Tap shown: Belfast Traditional in chrome TBL1CM/

10
YEAR
WARRANTY

FARMHOUSE BELFAST

Created to seamlessly blend modern living with a traditional country kitchen, the Farmhouse Belfast is a stylish alternative to a classic design, and now available in a brand new anthracite grey finish.

- Fire-clay ceramic
- New anthracite grey finish
- Weir style overflow
- Reversible
- Waste kit included



Tap shown: Intense in brushed TID1BF/

10
YEAR
WARRANTY

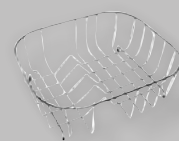
793 x 491mm 2 bowl sit-on Belfast sink
CFBL800WH/



Min. Base unit: 800mm
Main bowl (L x W x D): 366 x 450 x 195mm
Second bowl (L x W x D): 366 x 450 x 195mm
Overall height: 220mm
Waste kit: Included

Compatible Accessories

KA12/
Draining basket
Stainless steel



595 x 455mm 1 bowl sit-on Belfast sink - White
CFBL595WH/



Min. base unit: 600mm
Main bowl (L x W x D): 535 x 395 x 222mm
Overall height: 252mm
Waste kit: Included

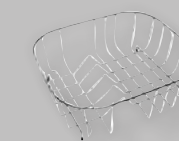
595 x 455mm 1 bowl sit-on Belfast sink - Anthracite Grey
CFBL595AN/



Min. base unit: 600mm
Main bowl (L x W x D): 535 x 395 x 222mm
Overall height: 252mm
Waste kit: Included

Compatible Accessories

KA12/
Strainer basket
Stainless steel



CLASSIC BELFAST

There's very little that captures the true essence of a traditional British kitchen quite like a Belfast sink. Sometimes referred to as a Butler sink, the large solid design typifies the very heart of the home. Available in single bowl and double bowl options.

- Fire-clay ceramic
- Note: Waste kits are sold separately



595 x 455mm 1 bowl sit-on Belfast sink
CCBL595WH/



Min. base unit: 600mm
Main bowl (L x W x D): 525 x 385 x 215mm
Overall Height: 250mm
Waste kit: Sold separately, please order WKIT13/

800 x 500mm 2 bowl sit on Belfast sink
CDB800WH/



Min. base unit: 800mm
Main bowl (L x W x D): 365 x 450 x 200mm
Second bowl (L x W x D): 365 x 450 x 200mm
Overall Height: 220mm
Waste kit: Sold separately, please order WKIT24/

Compatible Accessories

KA12/
Draining basket
Stainless steel

WKIT13/
Waste kit for
1 bowl sinks

WKIT24/
Waste kit for
1.5 bowl sinks



BELFAST

Choose the Belfast for a contemporary finished look; featuring a grid overflow instead of a traditional weir design, the Belfast also features a large bowl offering ample space to wash large pots and pans.

- Fire-clay ceramic
- Note: Waste kits are sold separately



595 x 475mm 1 bowl Belfast sink
CBL595WH/

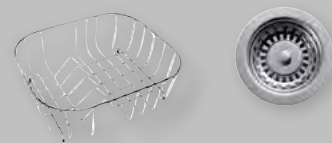


Min. base unit: 600mm
Main bowl (L x W x D): 550 x 420 x 200mm
Overall Height: 220mm
Waste kit: Sold separately, please order WKIT15/

Compatible Accessories

KA12/
Draining basket
Stainless steel

WKIT15/
Waste kit for
1 bowl sinks



RUSTIQUE

Create a modern finished look with the addition of a Rustique fire-clay ceramic bowl. Fitted as either an inset or undermount sink, the Rustique will provide a real focal point in the kitchen and contrast excellently to all colours and finishes.

- Inset or undermount installation
- Waste kit included



595 x 460mm 1.5 bowl sink
CRUB3216WH/



Min. base unit: 600mm
Main bowl (L x W x D): 337 x 400 x 196mm
Second bowl (L x W x D): 183 x 400 x 176mm
Waste kit: Included

600 x 522mm 1.3 bowl sink
CRUB3314WH/



Min. base unit: 650mm
Main bowl (L x W x D): 360 x 460 x 195mm
Second bowl (L x W x D): 162 x 300 x 175mm
Waste kit: Included

462 x 462mm 1 bowl sink
CRUB4040WH/



Min. base unit: 500mm
Main bowl (L x W x D): 400 x 400 x 195mm
Waste kit: Included

598 x 462mm 1 bowl sink
CRUB5340WH/



Min. base unit: 650mm
Main bowl (L x W x D): 536 x 401 x 195mm
Waste kit: Included

445mm Ø 1 bowl sink
CRUB385WH/



Min. base unit: 500mm
Main bowl (L x W x D): 385mm Ø
Waste kit: Included

234 x 460mm 1 bowl sink
CRUB1740WH/



Min. base unit: 300mm
Main bowl (L x W x D): 174x 400 x 195mm
Waste kit: Included



KITCHEN TAPS & ACCESSORIES

The Finishing Touches

Complement your kitchen sink with a Rangemaster tap, waste disposal unit and compatible accessory. Our taps and accessories have been designed to help assist with daily tasks so that cooking and cleaning are made easier.

TAPS

All of our taps are manufactured from high-grade brass and finished with state of the art long-lasting electrolytic coatings. A ceramic disc cartridge is also included with every tap which provides smooth handle movement and ensures the user has full control over the flow and temperature of the water.

There are a variety of designs and finishes available to choose from including filter taps, pull out taps and our state of the art 4-in-1 Geo hot water tap, which safely dispenses 98° hot water and crystal clear filtered water.

KEY FEATURES



ANTI-SPLASH SPOUT

The spout features a honeycomb aerator design which mixes air with water to emit a soft 'champagne like' water flow with no splash.



PULL-OUT HOSE

For ultimate food preparation and cleaning results choose a tap with a pull out hose, the majority of our designs feature a retractable hose which sits discreetly within the tap not altering its appearance from a standard tap.

WATER PRESSURE

The flow of water is determined from the water pressure available in your home, identifying the type of plumbing system already installed will help you choose a tap to suit your water pressure.



ALL PRESSURE

The majority of our taps have been designed to work with all plumbing systems, including low pressure hot water tanks. Look for the 'A' symbol opposite across our range which highlights compatibility with all water systems from 0.2 bar onwards.



MEDIUM PRESSURE

Some of our taps require plumbing systems with a higher bar pressure of 0.5 bar onwards, look for the 'M' symbol opposite against these types of taps.



HIGH PRESSURE

Taps with a 'H' symbol will require a plumbing system with 1.0 bar or higher when installing.



98° HOT WATER

4-IN-1 TAPS



Introducing
GEO
4-in-1

WATER. EVOLVED

Rangemaster's latest addition is GEO; An evolution in 4-in-1 taps delivering domestic hot and cold, filtered cold and 98° hot.

- Consistent 98° hot water – can deliver 100 cups an hour
- Anti-splash spout
- Dual filtered cold water
- Anti-scale boiler technology
- Child safe Hotfob™
- 0.5 bar minimum operating pressure

Smart, efficient and safe; GEO offers safe dispensing of 98° water with its child safe key fob system, smart anti-scale technology for hassle free maintenance and efficiently delivers over 100 cups of perfectly filtered 98° water an hour.



FILTERED

COLD

HOT



Geo Trend Tap

A statement piece which sits tall and complementing any kitchen style thanks to its beautiful sweeping swan neck design.

GEO43TRECM/ Chrome finish
GEO43TREBF/ Brushed finish

Tap height: 425mm
Spout reach: 216mm
Min. pressure: 0.5 bar



Geo Classic Tap

A classic alternative to the Geo Trend, the Geo Classic features a curved body with subtle trim, its design will sit perfectly within a traditional styled kitchen.

GEO43CLACM/ Chrome finish
GEO43CLABF/ Brushed finish

Tap height: 425mm
Spout reach: 216mm
Min. pressure: 0.5 bar

Filter Taps

Rangemaster's filter taps deliver crystal clear, clean water thanks to the high quality carbon filter included, which reduces impurities and delivers fresh tasting water at the push of a handle. Reduce your plastic usage by investing in a filtered tap at home, each filter cartridge will deliver 2,500 litres of water and can be easily replaced when needed.



Pull Out Taps

Choose a kitchen tap with pull out function for ultimate food preparation and cleaning results. Thanks to its extendable hose, larger pots and pans which cannot fit easily in standard sinks can be cleaned easily. The majority of our designs feature a retractable hose which sits discreetly within the tap not altering its appearance from a standard tap.



Pro Spray
Featuring an open coil design and single lever handle with jet and spray self cancelling sprayhead.

TPR1CM/ Chrome finish

Tap height: 535mm
Spout reach: 184mm
Min. pressure: 1.5 bar



Aquatrend Spring
Sitting tall and proud, the Aquatrend Spring creates a bold statement piece in your kitchen.

TRE1SPRCM/ Chrome finish

Tap height: 528mm
Spout reach: 188mm
Min. pressure: 0.5 bar



Aquatrend Pull Out
Featuring a unique pin handle design and dual lever control function.

TRE1POCM/ Chrome finish
TRE1POBF/ Brushed finish

Tap height: 388mm
Spout reach: 220mm
Min. pressure: 1.5 bar



Aquatrend Single Lever Pull Out
Featuring a unique pin handle design and single lever control function.

TRE1SLPOCM/ Chrome finish
TRE1SLPOBF/ Brushed finish

Tap height: 390mm
Spout reach: 220mm
Min. pressure: 1.5 bar



Aquaclassic Filter Tap
A classic design featuring white handles, the perfect addition to a traditional styled kitchen.

TSA4CM/ Chrome finish

Tap height: 392mm
Spout reach: 216mm
Min. pressure: 0.2 bar



Cruciform Filter Tap
A modern alternative with its sweeping swan neck and contemporary handle design.

TSA5CM/ Chrome finish
TSA5BF/ Brushed finish

Tap height: 392mm
Spout reach: 216mm
Min. pressure: 0.2 bar



Aquadisc 5 Pull Out
Featuring a modern quad neck design, the Aquadisc 5 subtly hides its additional pull-out function within the spout design.

TAD5POCM/ Chrome finish

Tap height: 275mm
Spout reach: 218mm
Min. pressure: 0.75 bar



Aquapro Pull Out
Clean cookware easily with the Aqua Pro Pull Out, its hose retracts neatly within the tap spout when not in use.

TAP1CM/ Chrome finish

Tap height: 285mm
Spout reach: 210mm
Min. pressure: 0.5 bar



Aquaspray
Featuring a jet and self cancelling sprayhead, Aquaspray is ideal for directional cleaning.

TAS3CM/ Chrome finish

Tap height: 180mm
Spout reach: 200mm
Min. pressure: 1.5 bar

Single Lever Taps

Operate your tap single-handed while maintaining maximum control over the temperature and flow of the water thanks to the ceramic disc cartridge included which has been designed to ensure a smooth handle operation is maintained when turned.



Quadrant Single Lever

Contemporary design with a modern slim spout and square base design.

TQSL1CM/ Chrome
TQSL1BF/ Brushed
TQSL1MB/ Matt Black

Tap height: 317mm
Spout reach: 219mm
Min. pressure: 0.5 bar

Quadrant Monostem 2

Uniquely designed, showcasing an ultra sleek minimalist design with a discreet handle design.

TMO2CM/ Chrome
TMO2BF/ Brushed

Tap height: 275mm
Spout reach: 206mm
Min. pressure: 0.5 bar

Aquatrend Single Lever

Aquatrend stands tall to create a focal point in your kitchen, now available in two new additional finishes.

TRE1SLCM/ Chrome
TRE1SLBF/ Brushed
TRE1SLMB/ Matt Black
TRE1SLBB/ Brushed Brass

Tap height: 390mm
Spout reach: 216mm
Min. pressure: 0.4 bar

Aspire

Featuring a modern flat handle and spout design for a sleek, contemporary finished look.

TAI1CM/ Chrome
TAI1BF/ Brushed

Tap height: 365mm
Spout reach: 231mm
Min. pressure: 0.4 bar

Quadrant Contemporary

Contemporary design with a modern slim spout and square base design.

TQC1CM/ Chrome
TQC1BF/ Brushed
TQC1MB/ Matt Black

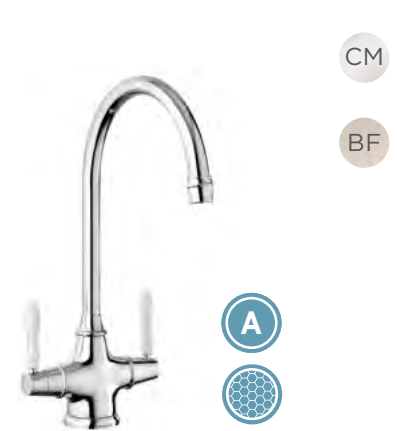
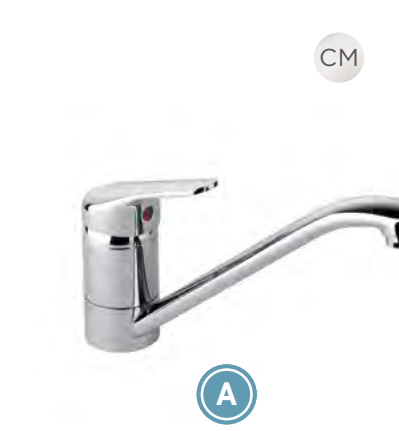
Tap height: 291mm
Spout reach: 219mm
Min. pressure: 0.4 bar

Belfast Traditional

Classically designed to complement a traditional Farmhouse Belfast sink, available in two colour finishes.

TBL1CM/ Chrome
TBL1BF/ Brushed

Tap height: 368mm
Spout reach: 190mm
Min. pressure: 0.1 bar



Conical Single Lever

A uniquely shaped body paired with a square spout design which creates an ultimate modern design piece.

TCOSL1CM/ Chrome
TCOSL1BF/ Brushed
TCOSL1MB/ Matt Black
TCOSL1BB/ Brushed Brass

Tap height: 294mm
Spout reach: 212mm
Min. pressure: 0.6 bar

Ellipse

Featuring a tall spout with overhead lever, the Ellipse range blends contemporary style with practicality.

TEP1CM/ Chrome
TEP1BF/ Brushed

Tap height: 277mm
Spout reach: 185mm
Min. pressure: 0.6 bar

Aquaflow

A compact solution where space may be restricted.

TAF1CM/ Chrome

Tap height: 163mm
Spout reach: 230mm
Min. pressure: 0.2 bar

Belfast Monobloc

The Belfast Monobloc complements Belfast style sinks perfectly thanks to its compact size and traditional styling.

TBM1CM/ Chrome
TBM1BF/ Brushed

Tap height: 343mm
Spout reach: 193mm
Min. pressure: 0.3 bar

Quadrant Monobloc

Combining a sharp square edged design with a soft curved spout for a subtle, modern look.

TQM1CM/ Chrome

Tap height: 335mm
Spout reach: 200mm
Min. pressure: 0.5 bar

Conical

A uniquely shaped body paired with a square spout design which creates an ultimate modern design piece.

TCO1CM/ Chrome
TCO1BF/ Brushed
TCO1MB/ Matt Black
TCO1BB/ Brushed Brass

Tap height: 294mm
Spout reach: 212mm
Min. pressure: 0.3 bar

Dual Lever Taps

A dual lever tap gives the user full control of the hot and cold water feeds, with an added benefit of the hot water boiler unit not activating unnecessarily when the cold water is turned, saving energy day-to-day.

Dual Lever Taps

5
YEAR
WARRANTY

5
YEAR
WARRANTY



Aquaclassic 3

Classically designed featuring crosshead handles and a tall sweeping neck spout.

TAC3CM/ Chrome
TAC3BF/ Brushed

Tap height: 380mm
Spout reach: 216mm
Min. pressure: 0.3 bar



Traditional Belfast Bridge

The Traditional Bridge mixer offers a choice of different handle finishes to perfectly complement your Belfast sink.

TBL3CM/CM Chrome - chrome handles
TBL3CM/WH Chrome - white handles
TBL3BF/BF Brushed - brushed handles

Tap height: 355mm
Spout reach: 192mm
Min. pressure: 0.3 bar



Cruciform

An elegant design with minimalist styling and softened edges.

TCF2CM/ Chrome
TCF2BF/ Brushed

Tap height: 392mm
Spout reach: 216mm
Min. pressure: 0.3 bar



Estuary

Classically designed featuring a curvature body and tapered handle design, available in three finishes.

TES1CM/ Chrome
TES1BF/ Brushed
TES1BC/ Brushed Copper

Tap height: 361mm
Spout reach: 194mm
Min. pressure: 0.3 bar



Aquaclassic 2

With the choice of multiple different handle finishes, Aquaclassic 2 can be paired with any ceramic styled sink.

TAC2CM/WH Chrome - white handles
TAC2CM/BL Chrome - black handles
TAC2CM/CM Chrome - chrome handles
TAC2BF/BF Brushed - brushed handles

Tap height: 359mm
Spout reach: 190mm
Min. pressure: 0.3 bar



Aquadisc 1

Minimalist design, Aquadisc features slim pin handles with a short neck.

TAD1CM/ Chrome

Tap height: 278mm
Spout reach: 193mm
Flow rate: 0.3 bar

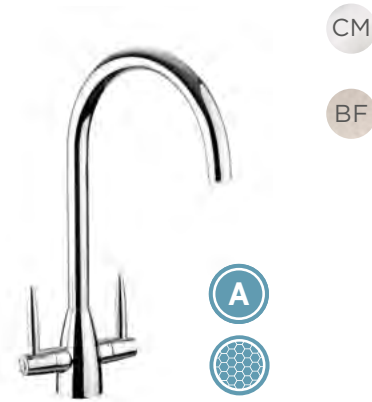


Aquatrend

A modern favourite, the Aquatrend delivers 'on-trend' styling with superb water output.

TRE1CM/ Chrome
TRE1BF/ Brushed
TRE1MB/ Matt Black
TRE1BB/ Brushed Brass

Tap height: 379mm
Spout reach: 216mm
Min. pressure: 0.3 bar



Aquavogue

Designed for the fashionista, Aquavogue is your style icon featuring a striking handle design and tall sweeping spout.

TVO1CM/ Chrome
TVO1BF/ Brushed

Tap height: 398mm
Spout reach: 216mm
Min. pressure: 0.3 bar



Parma

A modern, minimalist design with flair - Parma is the perfect accompaniment to any styled kitchen scheme.

TPM1CM/ Chrome
TPM1BF/ Brushed

Tap height: 389mm
Spout reach: 216mm
Min. pressure: 0.3 bar



Aquamode

Boasting a unique handle design and geometrically designed body.

TAE1CM/ Chrome

Tap height: 353mm
Spout reach: 190mm
Min. pressure: 0.3 bar



Intense

If striking design is what you seek, the Intense tap delivers this, featuring a tall sweeping neck and available in 5 colours.

TID1CM/ Chrome
TID1BF/ Brushed
TID1BC/ Brushed Copper
TID1MB/ Matt Black
TID1GR/ Graphite

Tap height: 398mm
Spout reach: 216mm
Min. pressure: 0.5 bar



Monorise

A popular favourite, Monorise features slim pin handles for a minimalist, subtle finished look.

TMR1CM/ Chrome
TMR1BF/ Brushed

Tap height: 363mm
Spout reach: 194mm
Min. pressure: 0.5 bar

Dual Lever Taps



Aquaquad

Modern in design with a quad style neck and tabbed handles, the Aquaquad is available in four finishes.

TAQ2CM/ Chrome
TAQ2BF/ Brushed
TAQ2MB/ Matt Black
TAQ2BB/ Brushed Brass

Tap height: 310mm
Spout reach: 192mm
Min. pressure: 0.4 bar



Aquadisc 5

Featuring easy operable handles and a straight spout design, the Aquadisc 5 is a modern favourite.

TAD5CM/ Chrome finish

Tap height: 277mm
Spout reach: 212mm
Min. pressure: 0.3 bar



Aquadisc 3

Classically designed, the Aquadisc 3 includes round handles and a low height spout, great for compact spaces.

TAD3CM/ Chrome finish
TAD3BF/ Brushed finish

Tap height: 210mm
Spout reach: 210mm
Min. pressure: 0.2 bar



Salorno

Subtly designed to suit any style of kitchen, featuring easy to use paddle handles with a low square neck design.

TSN1CM/ Chrome finish
TSN1BF/ Brushed finish

Tap height: 232mm
Spout reach: 207mm
Min. pressure: 0.4 bar



Aquavibe

A classic favourite with pin handle design and short sweeping neck.

TVB1CM/ Chrome finish
TVB1BF/ Brushed finish

Tap height: 287mm
Spout reach: 214mm
Min. pressure: 0.2 bar

Waste disposal units

Clean, hygienic and safe to use, all Rangemaster waste disposal units are easy to install and compatible with all of our sinks. With a wide choice of different options available all of which include the following features:

- **Bio Shield Antimicrobial Protection** - a hygienic agent which inhibits the growth of a wide range of micro organisms and provides protection against odours.
- **Turntable Operation** - no knives or blades are used thanks to the turntable included which uses generated centrifugal force to hurl waste against the grinding ring which shreds the waste into fine pieces.
- **Torque Master** - a balanced grinding system which provides superior torque speed with less vibration and noise providing a longer life system.
- **Sound Shell** - protected with an outer shell which reduces noise levels when the waste disposal unit is in operation.
- **Continuous Feed Function** - mains operated controlled by a switch.



Economy 500

Suitable for small households.

WDU500/
2 year guarantee



Standard 700

Suitable for small to medium households.

WDU700/
3 year guarantee



Mid Duty 750

Suitable for large households.

WDU750/
3 year guarantee

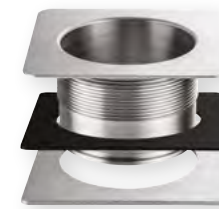


Heavy Duty 800

Suitable for large & busy households.

WDU800/
4 year guarantee

Sink accessories



Square Waste Adaptor

To be used with waste disposal units on Arlington, Kube & Quad sinks.

WDUSQAD/



Strainer Basket

Compatible with all sinks
Stainless steel

KA12/



Chopping Board

Bamboo

KA10/



Strainer Bowl

Stainless Steel

KA26/ (A)
KA28/ (A)
KA09/ (B)

STAINLESS STEEL INSET SINKS

	Arlington AR9851_/_	Arlington AR9852_/_	Baltimore BL8001/_	Baltimore BL9501/_	Baltimore BL9502/_	Glendale GL9501/_	Glendale GL9502/_	Houston HS9851/_	Houston HS9852/_	Keyhole KY10001/_
Drainer Position	Handed	Handed	Reversible	Reversible	Reversible	Reversible	Reversible	Reversible	Reversible	Reversible
No. of Bowls	1	1½	1	1	1½	1	1½	1	1½	1
Min. Base Unit (mm)	600	600	450	600	600	500	600	600	600	500
Overall Length (mm)	985	985	800	950	950	950	950	985	985	1000
Overall Width (mm)	508	508	508	508	508	508	508	508	508	520
Cutout Size Length (mm)	965	965	780	930	930	930	930	965	965	980
Cutout Size Width (mm)	488	488	488	488	488	488	488	488	488	500
Main Bowl Length (mm)	450	340	340	420	340	360	360	400	350	420 Ø
Main Bowl Width (mm)	420	420	424	400	410	424	424	420	420	420 Ø
Main Bowl Depth (mm)	190	190	150	160	160	155	155	190	190	189
Second Bowl Length (mm)	-	160	-	-	175	-	156	-	156	-
Second Bowl Width (mm)	-	350	-	-	320	-	342	-	342	-
Second Bowl Depth (mm)	-	130	-	-	80	-	120	-	120	-
Material	18/10 SS	18/10 SS	18/10 SS	18/10 SS	18/10 SS	18/10 SS	18/10 SS	18/10 SS	18/10 SS	18/10 SS
Gauge (mm)	0.9	0.9	0.7	0.7	0.8	0.7	0.7	0.9	0.9	0.9
Finish Drainer	Micro-Sheen	Micro-Sheen	Micro-Sheen	Micro-Sheen	Micro-Sheen	Micro-Sheen	Micro-Sheen	Micro-Sheen	Micro-Sheen	Micro-Sheen
Finish Bowl	Micro-Sheen	Micro-Sheen	Micro-Sheen	Micro-Sheen	Micro-Sheen	Micro-Sheen	Micro-Sheen	Micro-Sheen	Micro-Sheen	Micro-Sheen
Waste Size Ø (mm)	1 x 90 square	2 x 90 square	1 x 89	1 x 89	2 x 89	1 x 89	2 x 89	1 x 89	2 x 89	1 x 89
Waste Kit	BSW	BSW	BSW	BSW	BSW	BSW	BSW	BSW	BSW	BSW
Tap Hole Size Ø (mm)	1 x 35	1 x 35	1 x 35	1 x 35	1 x 35	1 x 35	1 x 35	1 x 35	1 x 35	-
Guarantee (years)	25	25	25	25	25	25	25	25	25	25

Keyhole KY10002/_	Manhattan MN10101_/_	Manhattan MN10102_/_	Michigan MG8001/_	Michigan MG9501/_	Michigan MG9502/_	Oakland OL9851_/_	Oakland OL9852_/_	Rockford RK9851_/_	Rockford RK9852_/_	Sedona SD9851/_	Sedona SD9852/_
Reversible	Handed	Handed	Reversible	Reversible	Reversible	Handed	Handed	Handed	Handed	Reversible	Reversible
1½	1	1½	1	1	1½	1	1½	1	1½	1	1½
800	500	600	450	500	600	600	600	600	600	600	600
1000	1010	1010	800	950	950	985	985	985	985	985	985
520	515	515	508	508	508	508	508	508	508	508	508
980	990	990	780	930	930	965	965	965	965	965	965
500	495	495	488	488	488	488	488	488	488	488	488
420 Ø	400	350	360	360	360	450	360	340	340	400	350
420 Ø	420	420	424	424	424	420	424	420	420	420	420
189	190	190	155	155	155	190	170	190	190	190	190
156	-	156	-	-	156	-	156	-	160	-	156
300	-	342	-	-	300	-	342	-	350	-	342
120	-	120	-	-	120	-	120	-	130	-	120
18/10 SS	18/10 SS	18/10 SS	18/10 SS	18/10 SS	18/10 SS	18/10 SS	18/10 SS	18/10 SS	18/10 SS	18/10 SS	18/10 SS
0.9	0.9	0.9	0.7	0.7	0.7	0.9	0.9	0.9	0.9	0.9	0.9
Micro-Sheen	Micro-Sheen	Micro-Sheen	Micro-Sheen	Micro-Sheen	Micro-Sheen	Micro-Sheen	Micro-Sheen	Micro-Sheen	Micro-Sheen	Micro-Sheen	Micro-Sheen
Micro-Sheen	Micro-Sheen	Micro-Sheen	Micro-Sheen	Micro-Sheen	Micro-Sheen	Micro-Sheen	Micro-Sheen	Micro-Sheen	Micro-Sheen	Micro-Sheen	Micro-Sheen
2 x 89	1 x 89	2 x 89	1 x 89	1 x 89	2 x 89	1 x 89	2 x 89	1 x 89	2 x 89	1 x 89	2 x 89
BSW	BSW	BSW	BSW	BSW	BSW	BSW	BSW	BSW	BSW	BSW	BSW
-	1 x 35	1 x 35	1 x 35	1 x 35	1 x 35	1 x 35	1 x 35	1 x 35	1 x 35	1 x 35	1 x 35
25	25	25	25	25	25	25	25	25	25	25	25

STAINLESS STEEL UNDERMOUNT SINKS

	Classic UB15/_	Classic UB35/_	Classic UB3515_/_	Classic UB3535/_	Classic UB40/_	Classic UB45/_	Classic UB4015_/_	Classic UB4040/_	Kube KUB18/_	Kube KUB34/_
Drainer Position	-	-	Reversible or Handed	-	-	-	Handed	-	-	-
No. of Bowls	1	1	1½	2	1	1	1½	2	1	1
Min. Base Unit (mm)	300	400	600	800	500	600	800	1000	300	400
Overall Length (mm)	185	378	597	787	460	490	671	945	210	370
Overall Width (mm)	370	448	472	472	440	460	460	460	430	430
Cutout Size Length (mm)	-	-	-	-	-	-	-	-	-	-
Cutout Size Width (mm)	-	-	-	-	-	-	-	-	-	-
Main Bowl Length (mm)	156	350	350	350	420	450	420	420	180	340
Main Bowl Width (mm)	342	420	420	420	400	420	400	400	400	400
Main Bowl Depth (mm)	120	190	190	190	190	190	190	190	140	200
Second Bowl Length (mm)	-	-	156	350	-	-	156	420	-	-
Second Bowl Width (mm)	-	-	342	420	-	-	342	400	-	-
Second Bowl Depth (mm)	-	-	120	190	-	-	120	190	-	-
Material	18/10 SS	18/10 SS	18/10 SS	18/10 SS	18/10 SS	18/10 SS	18/10 SS	18/10 SS	18/10 SS	18/10 SS
Gauge (mm)	0.8	0.8	0.9	0.9	0.9	0.9	0.9	0.9	1.0	1.0
Finish Drainer	-	-	-	-	-	-	-	-	-	-
Finish Bowl	Micro-Sheen	Micro-Sheen	Micro-Sheen	Micro-Sheen	Micro-Sheen	Micro-Sheen	Micro-Sheen	Micro-Sheen	Micro-Sheen	Micro-Sheen
Waste Size Ø (mm)	1 x 89	1 x 89	2 x 89	2 x 89	1 x 89	1 x 89	2 x 89	2 x 89	1 x 90 square	1 x 90 square
Waste Kit	BSW	BSW	BSW	BSW	BSW	BSW	BSW	BSW	BSW	BSW
Tap Hole Size Ø (mm)	-	-	-	-	-	-	-	-	-	-
Guarantee (years)	25	25	25	25	25	25	25	25	25	25

Kube KUB3418_/_	Kube KUB40/_	Kube KUB50/_	Kube KUB70/_	Kube KUB4040/_	Kube KUB5018_/_	Quad QUB16/_	Quad QUB18/_	Quad QUB34/_	Quad QUB3434/_	Quad QUB48/_	Quad QUB3416_/_
Handed	-	-	-	-	Handed	-	-	-	-	-	Handed
1½	1	1	1	2	1½	1	1	1	2	1	1½
600	500	600	800	900	800	300	300	400	800	600	600
580	430	530	730	860	740	200	234	390	760	530	580
430	430	430	430	430	430	340	450	450	450	450	450
-	-	-	-	-	-	-	-	-	-	-	-
-	-	-	-	-	-	-	-	-	-	-	-
340	400	500	700	400	500	160	180	340	340	480	340
400	400	400	400	400	400	300	400	400	400	400	400
200	200	200	200	200	200	115	120	185	185	195	185
180	-	-	-	400	180	-	-	-	340	-	160
400	-	-	-	400	400	-	-	-	400	-	300
140	-	-	-	200	140	-	-	-	185	-	115
18/10 SS	18/10 SS	18/10 SS	18/10 SS	18/10 SS	18/10 SS	18/10 SS	18/10 SS	18/10 SS	18/10 SS	18/10 SS	18/10 SS
1.0	1.0	1.0	1.2	1.0	1.0	0.8	0.8	0.8	0.8	0.8	0.8
-	-	-	-	-	-	-	-	-	-	-	-
Micro-Sheen	Micro-Sheen	Micro-Sheen	Micro-Sheen	Micro-Sheen	Micro-Sheen	Micro-Sheen	Micro-Sheen	Micro-Sheen	Micro-Sheen	Micro-Sheen	Micro-Sheen
2 x 90 square	1 x 90 square	1 x 90 square	1 x 90 square	2 x 90 square	2 x 90 square	1 x 90 square	1 x 90 square	1 x 90 square	2 x 90 square	1 x 90 square	2 x 90 square
BSW	BSW	BSW	BSW	BSW	BSW	BSW	BSW	BSW	BSW	BSW	BSW
-	-	-	-	-	-	-	-	-	-	-	-
25	25	25	25	25	25	25	25	25	25	25	25

Continued on next page

STAINLESS STEEL UNDERMOUNT SINKS

Continued	Quad QUB3418_/	Quad QUB4818_/
Drainer Position	Handed	Handed
No. of Bowls	1½	1½
Min. Base Unit (mm)	600	800
Overall Length (mm)	600	740
Overall Width (mm)	450	450
Cutout Size Length (mm)	-	-
Cutout Size Width (mm)	-	-
Main Bowl Length (mm)	340	480
Main Bowl Width (mm)	400	400
Main Bowl Depth (mm)	180	195
Second Bowl Length (mm)	180	180
Second Bowl Width (mm)	400	400
Second Bowl Depth (mm)	120	120
Material	18/10 SS	18/10 SS
Gauge (mm)	0.8	0.8
Finish Drainer	-	-
Finish Bowl	Micro-Sheen	Micro-Sheen
Waste Size Ø (mm)	2 x 90 square	2 x 90 square
Waste Kit	BSW	BSW
Tap Hole Size Ø (mm)	-	-
Guarantee (years)	25	25

GRANITE INSET SINKS

	Scoria SCO1051_/	Scoria SCO1052_/
Drainer Position	Reversible	Reversible
No. of Bowls	1	1½
Min. Base Unit (mm)	600	600
Overall Length (mm)	1000	1000
Overall Width (mm)	500	500
Cutout Size Length (mm)	980	980
Cutout Size Width (mm)	480	480
Main Bowl Length (mm)	480	345
Main Bowl Width (mm)	440	440
Main Bowl Depth (mm)	200	200
Second Bowl Length (mm)	-	155
Second Bowl Width (mm)	-	295
Second Bowl Depth (mm)	-	146
Material	Igneous Granite	Igneous Granite
Waste Size Ø (mm)	1 x 90	2 x 90
Waste Kit	BSW	BSW
Tap Hole Size Ø (mm)	-	-
Min. Worktop Thickness (mm)	30	30
Max. Worktop Thickness (mm)	40	40
Guarantee (years)	25	25

GRANITE INSET SINKS

	Amethyst AME1051_/	Amethyst AME1052_/	Amethyst AME860_/	Andesite AND1051_/	Andesite AND1052_/
Drainer Position	Reversible	Reversible	Reversible	Reversible	Reversible
No. of Bowls	1	1½	1	1	1½
Min. Base Unit (mm)	600	600	450	600	600
Overall Length (mm)	1000	1000	860	1000	1000
Overall Width (mm)	500	500	500	500	500
Cutout Size Length (mm)	980	980	840	980	980
Cutout Size Width (mm)	480	480	480	480	480
Main Bowl Length (mm)	482	341	348	480	345
Main Bowl Width (mm)	422	422	422	430	430
Main Bowl Depth (mm)	220	204	204	200	200
Second Bowl Length (mm)	-	162	-	-	155
Second Bowl Width (mm)	-	301	-	-	340
Second Bowl Depth (mm)	-	148	-	-	146
Material	Igneous Granite	Igneous Granite	Igneous Granite	Igneous Granite	Igneous Granite
Waste Size Ø (mm)	1 x 90	2 x 90	1 x 90	1 x 90	2 x 90
Waste Kit	BSW	BSW	BSW	BSW	BSW
Tap Hole Size Ø (mm)	-	-	-	-	-
Min. Worktop Thickness (mm)	30	30	30	30	30
Max. Worktop Thickness (mm)	40	40	40	40	40
Guarantee (years)	25	25	25	25	25

GRANITE UNDERMOUNT SINKS

	Paragon PAR1632_/	Paragon PAR3115_/	Paragon PAR3641_/	Paragon PAR4432_/	Paragon PAR4553_/
Drainer Position	-	Right Hand	-	-	-
No. of Bowls	1	1½	2	1	1
Min. Base Unit (mm)	300	600	900	600	600
Overall Length (mm)	215	550	824	501	533
Overall Width (mm)	378	430	481	377	457
Cutout Size Length (mm)	162	490	776	449	488
Cutout Size Width (mm)	325	370	433	325	410
Main Bowl Length (mm)	162	310	362	449	469
Main Bowl Width (mm)	325	370	395	325	393
Main Bowl Depth (mm)	128	200	241	168	209
Second Bowl Length (mm)	-	152	362	-	-
Second Bowl Width (mm)	-	370	395	-	-
Second Bowl Depth (mm)	-	130	241	-	-
Material	Igneous Granite	Igneous Granite	Igneous Granite	Igneous Granite	Igneous Granite
Waste Size Ø (mm)	1 x 90	2 x 90	2 x 92	1 x 90	1 x 92
Waste Kit	BSW	BSW	BSW	BSW	BSW
Tap Hole Size Ø (mm)	-	-	-	-	-
Guarantee (years)	25	25	25	25	25

Cubix CX9851_/	Cubix CX9852_/	Elements ELE1051_/	Elements ELE1052_/	Lunar LU9851_/	Lunar LU9852_/	Mayon MAY1051_/	Mayon MAY1052_/	Mayon MAY690_/	Mica MIC1051_/	Mica MIC1052_/	Mica MIC860_/
Reversible	Reversible	Reversible	Reversible	Reversible	Reversible	Reversible	Reversible	Reversible	Reversible	Reversible	Reversible
1	1½	1	1½	1	1½	1	1½	1	1	1½	1
600	650	600	600	600	650	600	600	450	600	600	500
985	985	1000	1000	985	985	1000	1000	690	1000	1000	860
508	508	500	500	508	508	510	510	510	500	500	500
965	965	980	980	965	965	980	980	670	980	980	840
488	488	480	480	488	488	490	490	490	480	480	480
500	350	480	380	500	344	500	334	365	484	335	415
428	428	420	420	428	428	446	446	448	443	443	446
180	180	180	180	195	195	195	195	195	195	195	195
-	160	-	125	-	165	-	167	-	-	151	-
-	355	-	282	-	428	-	296	-	-	336	-
-	153	-	120	-	125	-	120	-	-	120	-
Neo-Rock Granite	Neo-Rock Granite	Igneous Granite	Igneous Granite	Neo-Rock Granite	Neo-Rock Granite	Igneous Granite	Igneous Granite	Igneous Granite	Igneous Granite	Igneous Granite	Igneous Granite
1 x 89	2 x 89	1 x 90	2 x 90	1 x 89	2 x 89	1 x 90	2 x 90	1 x 90	1 x 90	2 x 90	1 x 90
BSW	BSW	BSW	BSW	BSW	BSW	BSW	BSW	BSW	BSW	BSW	BSW
-	-	-	-	-	-	-	-	-	-	-	-
29	29	30	30	29	29	30	30	30	30	30	30
46	46	40	40	46	46	40	40	40	40	40	40
25	25	25	25	25	25	25	25	25	25	25	25

FIRE-CLAY CERAMIC INSET SINKS

	Austell CAU10101WH/	Austell CAU10102WH/	Nevada CNV1WH/	Nevada CNV2WH/	Portland CPL10101WH/	Portland CPL10102WH/	Rustic CRT10101WH/	Rustic CRT10202WH/
Drainer Position	Reversible	Reversible	Reversible	Reversible	Reversible	Reversible	Reversible	Reversible
No. of Bowls	1	1½	1	1½	1	1½	1	1½
Min. Base Unit (mm)	600	600	600	600	600	600	600	600
Overall Length (mm)	1000	1000	1010	1010	1010	1010	1000	1000
Overall Width (mm)	500	500	510	510	510	510	500	500
Cutout Size Length (mm)	970	970	990	990	990	990	980	980
Cutout Size Width (mm)	470	470	490	490	490	490	480	480
Main Bowl Length (mm)	449	340	470	350	460	350	460	360
Main Bowl Width (mm)	415	415	340	340	400	410	390	390
Main Bowl Depth (mm)	190	190	185	190	195	195	195	195
Second Bowl Length (mm)	-	170	-	140	-	135	-	147
Second Bowl Width (mm)	-	300	-	340	-	257	-	260
Second Bowl Depth (mm)	-	142	-	125	-	125	-	120
Material	Fire-clay	Fire-clay	Fire-clay	Fire-clay	Fire-clay	Fire-clay	Fire-clay	Fire-clay
Waste Size Ø (mm)	1 x 90	2 x 90	1 x 89	2 x 89	1 x 89	2 x 89	1 x 89	1 x 90, 1 x 60
Waste Kit	BSW	BSW	BSW	BSW	BSW	BSW	BSW	BSW
Tap Hole Size Ø (mm)	-	-	-	-	-	-	-	-
Guarantee (years)	10	10	10	10	10	10	10	10

Please refer to fitting instructions for recommended min/max worktop dimensions.

FIRE-CLAY CERAMIC BELFAST AND UNDERMOUNT INSET SINKS

	Belfast CBL595WH/	Classic Belfast CCBL595WH/	Classic Belfast CDB800WH/	Farmhouse Belfast CFBL595_/	Farmhouse Belfast CFBL800WH/	Rustique CRUB1740WH/	Rustique CRUB3216WH/	Rustique CRUB3314WH/	Rustique CRUB385WH/	Rustique CRUB4040WH/
Drainer Position	-	-	-	-	-	-	Right Hand	Right Hand	-	-
No. of Bowls	1	1	2	1	2	1	1.5	1.3	1	1
Min. Base Unit (mm)	600	600	800	600	800	300	600	650	500	500
Overall Length (mm)	595	595	800	595	793	234	595	600	445 Ø	462
Overall Width (mm)	475	455	500	455	491	460	460	522	445 Ø	462
Overall Height (mm)	220	250	220	252	220	-	-	-	-	-
Cutout Size Length (mm)	-	-	-	-	-	-	-	-	-	-
Cutout Size Width (mm)	-	-	-	-	-	-	-	-	-	-
Main Bowl Length (mm)	550	525	365	535	366	174	337	360	385 Ø	400
Main Bowl Width (mm)	420	385	450	395	450	400	400	460	385 Ø	400
Main Bowl Depth (mm)	200	215	200	222	195	195	196	195	174	195
Second Bowl Length (mm)	-	-	365	-	366	-	183	162	-	-
Second Bowl Width (mm)	-	-	450	-	450	-	400	300	-	-
Second Bowl Depth (mm)	-	-	200	-	195	-	176	175	-	-
Material	Fire-clay	Fire-clay	Fire-clay	Fire-clay	Fire-clay	Fire-clay	Fire-clay	Fire-clay	Fire-clay	Fire-clay
Waste Size Ø (mm)	1 x 90	1 x 65	2 x 90	1 x 60	2 x 89	1 x 90	2 x 90	2 x 90	1 x 89	1 x 90
Waste Kit	BSW	BSW	BSW	BSW	BSW	BSW	BSW	BSW	BSW	BSW
Tap Hole Size Ø (mm)	-	-	-	-	-	-	-	-	-	-
Guarantee (years)	10	10	10	10	10	10	10	10	10	10

NB. Rustique bowls can be installed as inset or undermount, please visit www.rangemastersinks.co.uk for cut out dimensions. Please refer to fitting instructions for recommended min/max worktop dimensions.

Rustique CRUB5340WH/
-
1
650
598
462
-
-
536
401
195
-
-
-
Fire-clay
1 x 91
BSW
-
10



Rustique 1.5B sink with Aquaclassic filter tap

TAPS

	Aquaclassic 2 TAC2_/	Aquaclassic 3 TAC3_/	Aquadisc 1 TAD1CM/	Aquadisc 3 TAD3_/	Aquadisc 5 TAD5_/	Aquadisc 5 Pull Out TAD5POCM/	Aquaflow TAF1CM/	Aquamode 1 TAE1_/	Aquapro TAP1_/	Aquaquad TAQ2_/
Min. Pressure (bar)	0.3	0.3	0.3	0.2	0.3	0.75	0.2	0.3	0.5	0.4
Max. Pressure (bar)	5.5	5.5	5.5	5.5	5.5	5.5	5.5	5.5	5.5	5.5
Overall Tap Height (mm)	359	380	278	210	277	275	163	353	285	310
Spout Exit Reach (mm)	190	216	193	210	212	218	230	190	210	192
Spout Exit Height (mm)	229	254	245	185	247	244	140	222	250	237
Guarantee (years)	5	5	5	5	5	5	5	5	5	5

Aquaspray 3 TAS3CM/	Aquatrend TRE1_/	Aquatrend TREIPO_/	Aquatrend SL TREISL_/	Aquatrend SL TREISLPO_/	Aquatrend Spring TREISPRCM/	Aquavibe TVB1_/	Aquavogue TVO1_/	Aspire TAI1_/	Belfast Mono TBM1_/	Belfast Trad. TBL1_/	Conical TCO1_/
1.5	0.3	1.5	0.4	1.5	0.5	0.2	0.3	0.4	0.3	0.1	0.3
5.5	5.5	5.5	5.5	5.5	5.5	5.5	5.5	5.5	5.5	5.5	5.5
180	379	388	390	390	528	287	398	365	343	368	294
200	216	220	216	220	188	214	216	231	193	190	212
120	253	203	264	205	200	247	272	230	232	260	264
5	5	5	5	5	5	5	5	5	5	5	5

	Conical SL TCOSL1_/	Cruciform TCF2_/	Ellipse TEPI1_/	Estuary TES1_/	Intense TID1_/	Monorise TMR1_/	Parma TPM1_/	Pro Spray TPR1CM/	Quad. Cont TQC1_/	Quad. Mono TQM1_/
Min. Pressure (bar)	0.6	0.3	0.6	0.3	0.5	0.5	0.3	1.5	0.4	0.5
Max. Pressure (bar)	5.5	5.5	5.5	5.5	5.5	5.5	5.5	5.5	5.5	5.5
Overall Tap Height (mm)	294	392	277	361	398	363	389	535	291	335
Spout Exit Reach (mm)	212	216	185	194	216	194	216	184	219	200
Spout Exit Height (mm)	264	265	210	230	273	233	263	225	271	230
Guarantee (years)	5	5	5	5	5	5	5	5	5	5

Quad. SL TQSL1_/	Quad. Stem TMO2_/	Salorno TSNI1_/	Trad. Bridge TBL3_/
0.5	0.5	0.4	0.3
5.5	5.5	5.5	5.5
317	275	232	355
219	206	207	192
297	250	203	243
5	5	5	5

FILTER TAPS

	Aquaclassic TSA4_/	Cruciform TSA5_/
Min. Pressure (bar)	0.2	0.2
Max. Pressure (bar)	5.5	5.5
Overall Tap Height (mm)	392	392
Spout Exit Reach (mm)	216	216
Spout Exit Height (mm)	265	265
Guarantee (years)	5	5

4-IN-1 HOT WATER TAPS

	GEO Trend GEO43TRE_/	GEO Classic GEO43CLA_/
Min. Pressure (bar)	0.5	0.5
Max. Pressure (bar)	5.5	5.5
Overall Tap Height (mm)	425	425
Spout Exit Reach (mm)	216	216
Spout Exit Height (mm)	298	298
Guarantee (years)	5	5

4-IN-1 HOT WATER BOILER

Min. Inlet Pressure (bar)	2
Boiler Type	Vented
Power Rating (W)	2800
Capacity (litres)	3
Min. Temperature (°C)	80
Max. Temperature (°C)	98
Guarantee (years)	2
Boiler Dimensions (mm)	175 x 400 x 410

RANGEmaster

Sinks & Taps

UNRIVALLED PERFORMANCE



Meadow Lane
Long Eaton
Nottingham
NG10 2GD
England

Trade Enquiries

+44 (0)115 946 4000
tradesales@agarangemaster.co.uk

Consumer Enquiries

01926 457628
consumers@agarangemaster.co.uk

rangemastersinks.co.uk rangemaster.co.uk

Copyright AGA Rangemaster Ltd 2020.
Registered in England & Wales under registered number 3872754.
Registered office: Meadow Lane, Long Eaton, Nottingham, NG10 2GD.
Brand names, words and logo are registered trademarks of AGA Rangemaster Ltd.

Rangemaster continuously seeks improvements in specification, design and production of products and thus, alterations take place periodically. Whilst every effort is made to produce up-to-date literature, this brochure should not be regarded as an infallible guide to current specification, nor does it constitute an offer for the sale of any particular product.



12/20 D007989